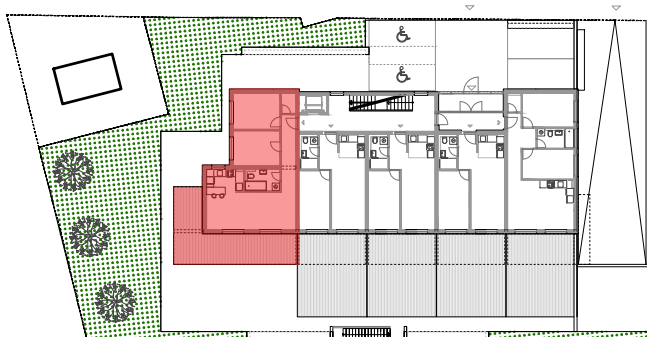
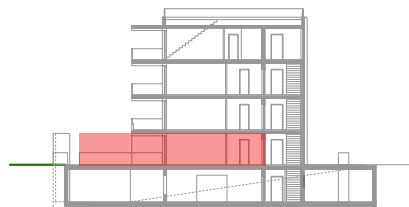


Tlocrt stana 005-V2 - PRIZEMLJE

Širina zidarskog otvora
visina zidarskog otvora



Položaj u zgradi

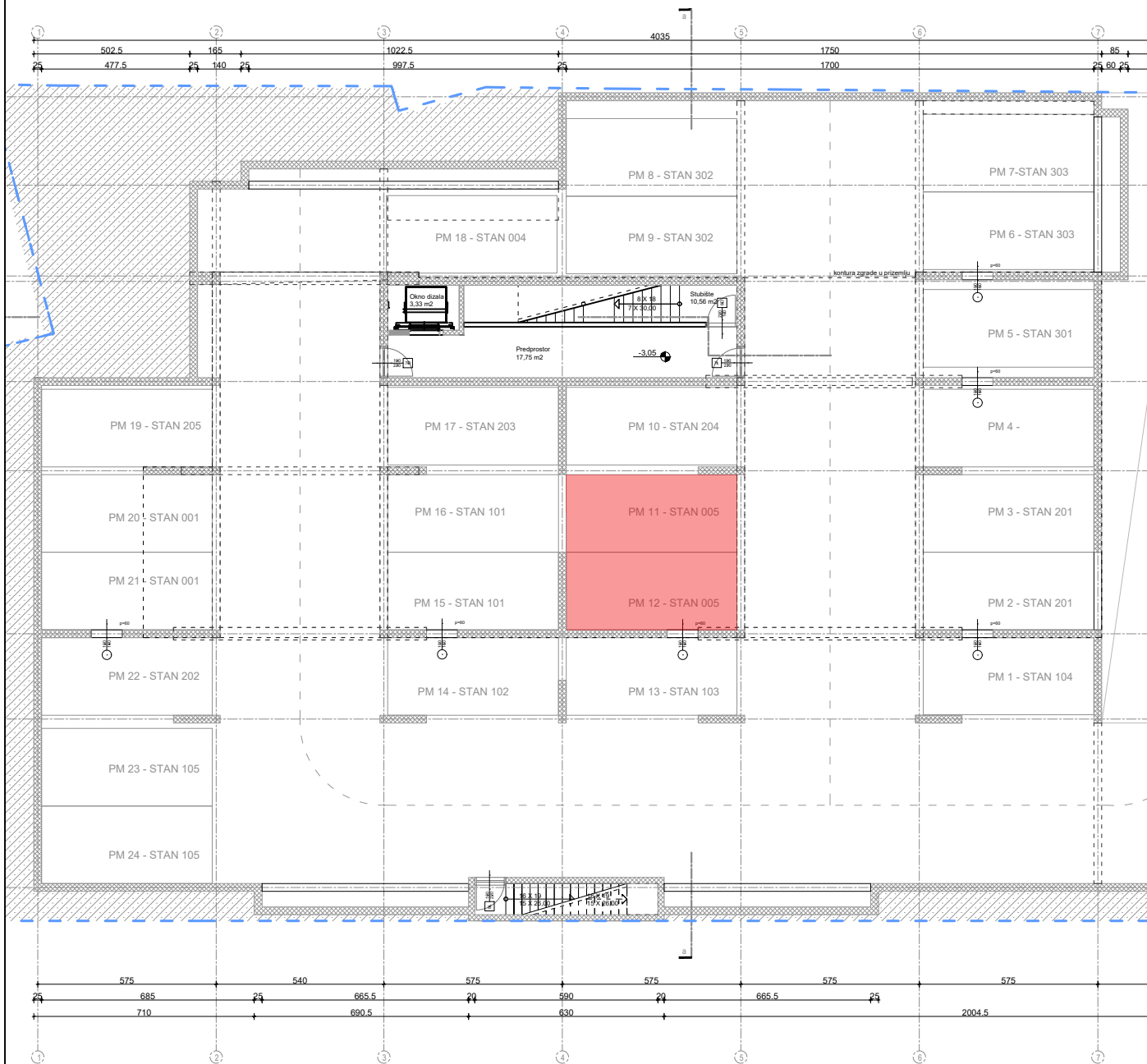


PRIZEMLJE- STAN - 005 - V2

	površina m ²	koef.	NETTO m ²
1 Dnevni boravak / blagovaonica	22.59	1.00	22.59
2 Kuhinja	5.38	1.00	5.38
3 Hodnik	7.56	1.00	7.56
4 Kupaonica	4.71	1.00	4.71
5 Spremište	1.78	1.00	1.78
6 Soba	11.13	1.00	11.13
7 Soba	11.41	1.00	11.41

8 Natkrivena terasa	34.14	0.50	17.07
9 Garažna parkirna mjesta br 11 i 12	27.50	0.50	13.75

UKUPNO 126.20 95.38



Stan 005-V2 - parkirna mjesta u garaži

