

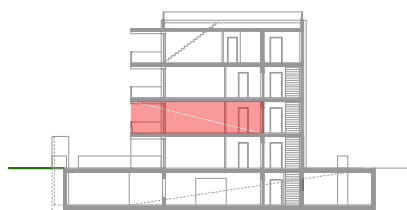
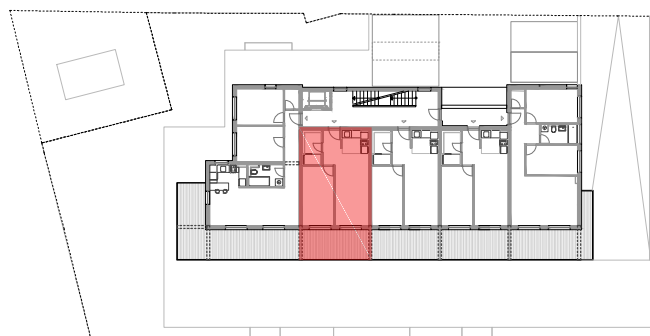
1. KAT- STAN - 104- V2

| | površina m ² | koef. | NETTO m ² |
|---------------------------------|-------------------------|-------|----------------------|
| 1 Dnevni boravak / blagovaonica | 16.09 | 1.00 | 16.09 |
| 2 Kuhinja | 4.27 | 1.00 | 4.27 |
| 3 Hodnik | 3.93 | 1.00 | 3.93 |
| 4 Kupaonica | 3.98 | 1.00 | 3.98 |
| 5 Soba | 12.53 | 1.00 | 12.53 |
| 6 Natkrivena terasa | 13.87 | 0.50 | 6.94 |
| 7 Garažno parkirno mjesto br. 1 | 13.75 | 0.50 | 6.88 |
| UKUPNO | 68.42 | | 54.61 |

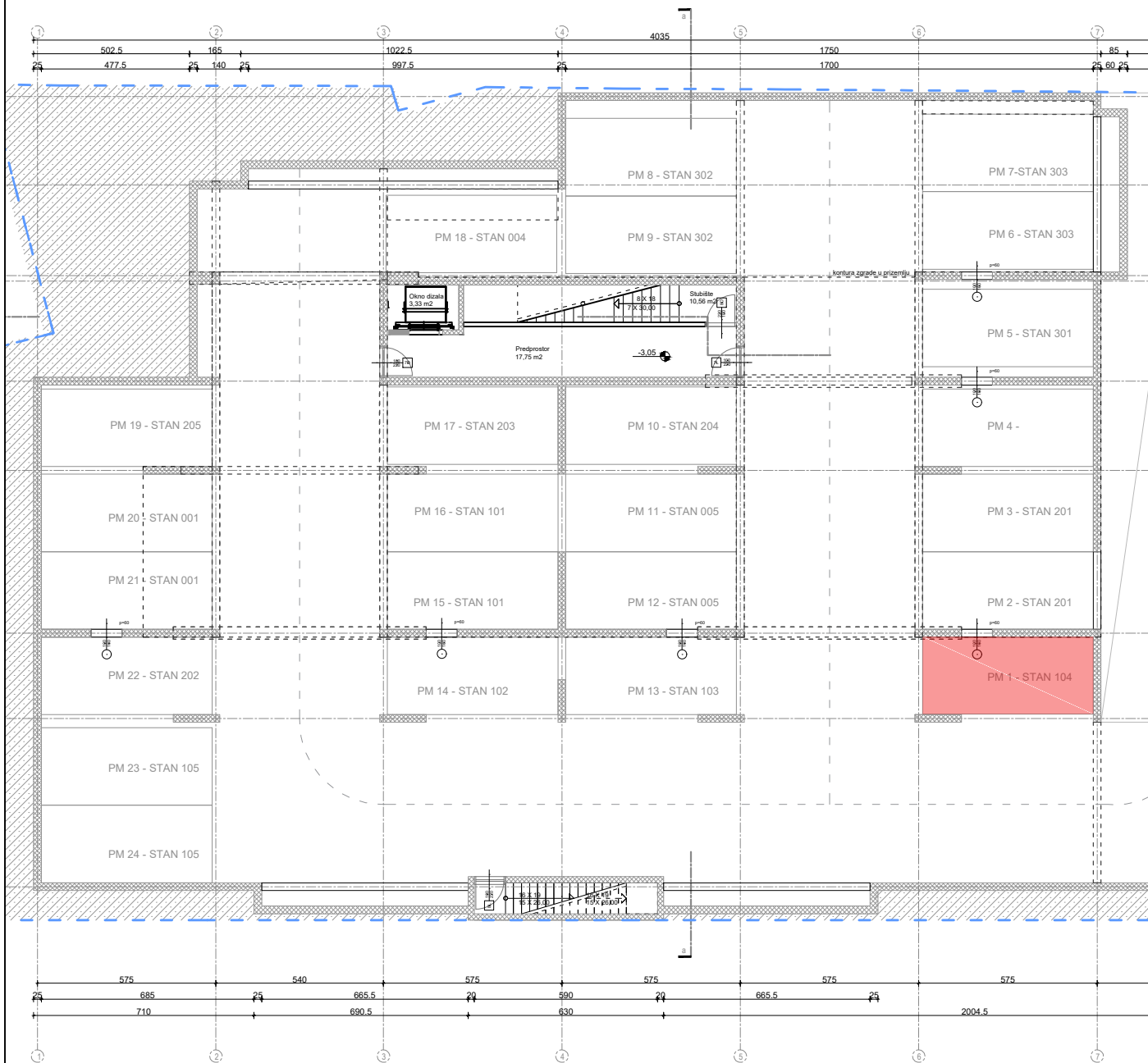
Tlocrt stana 104-V2 - PRVI KAT



Širina zidarskog otvora
visina zidarskog otvora



Položaj u zgradi



Stan 104-V2 - parkirna mjesta u garaži

