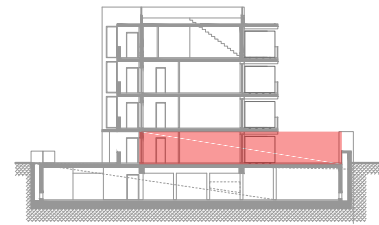
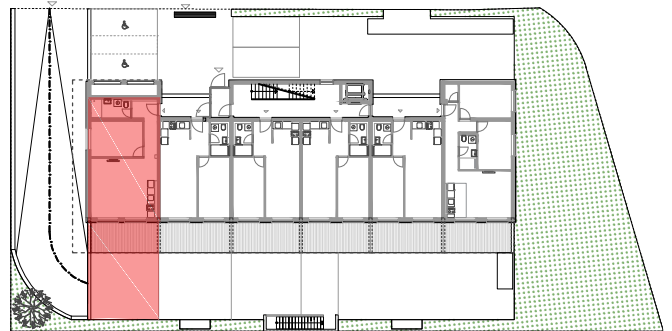


PRIZEMLJE- STAN - 001 - V3

	površina m ²	koef.	NETTO m ²
1 Dnevni boravak / blagovaonica	21.25	1.00	21.25
2 Kuhinja	4.87	1.00	4.87
3 Hodnik	6.49	1.00	6.49
4 Kupaonica	5.09	1.00	5.09
5 Soba	12.68	1.00	12.68
6 Natkrivena terasa	14.20	0.50	7.10
7 Nenatkrivena terasa	31.20	0.20	6.24
8 Garažno parkirno mjesto br. 23	13.75	0.50	6.88

UKUPNO 109.53 70.60

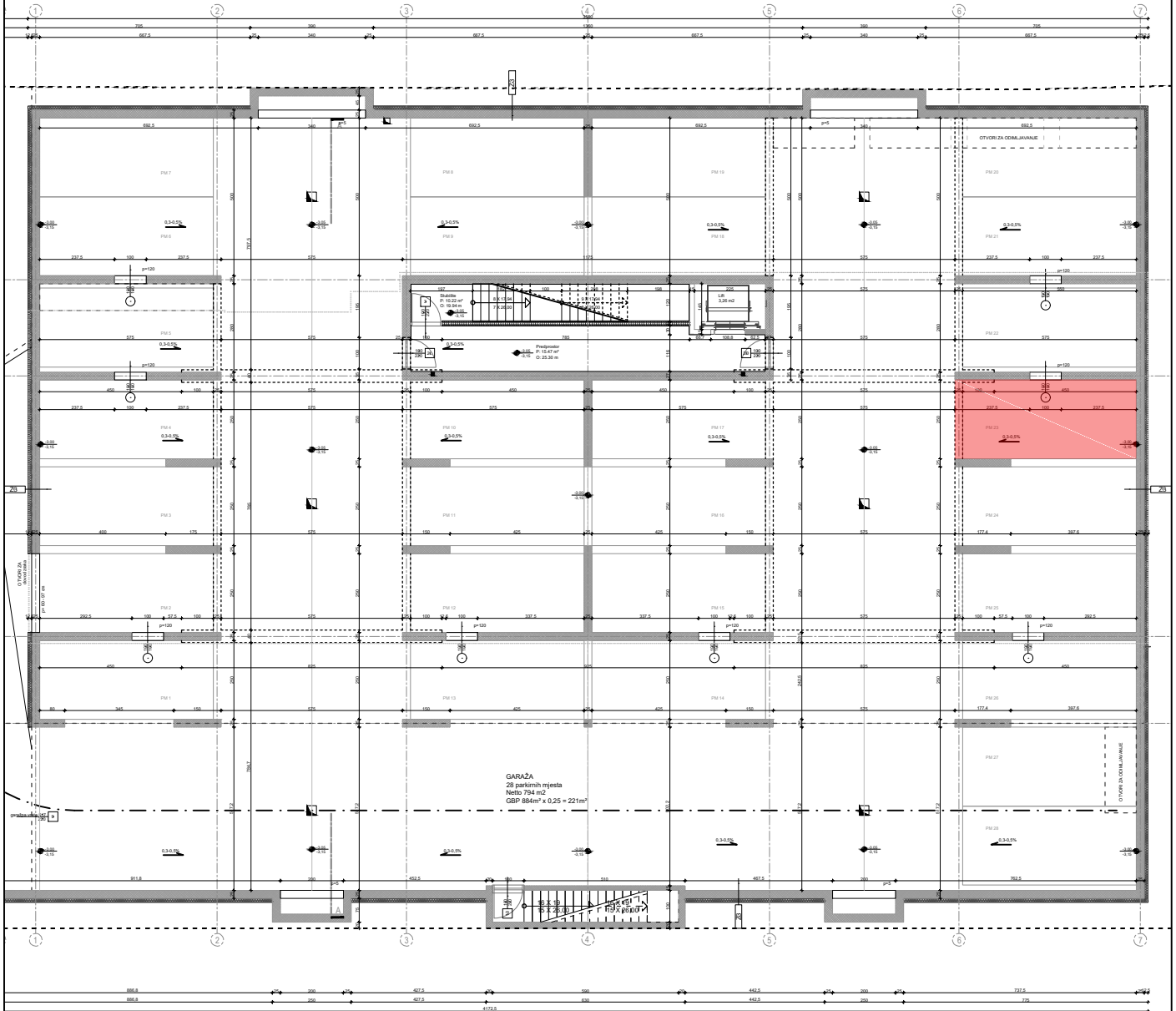


Položaj u zgradi

Tlocrt stana 001-V3 - PRIZEMLJE



Širina zidarskog otvora
visina zidarskog otvora



STAN 001-V3 - PARKIRNO MJESTO U GARAŽI

