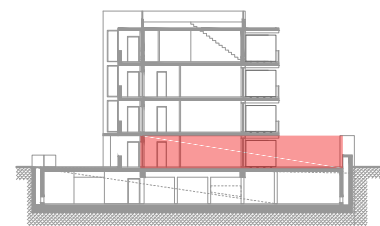
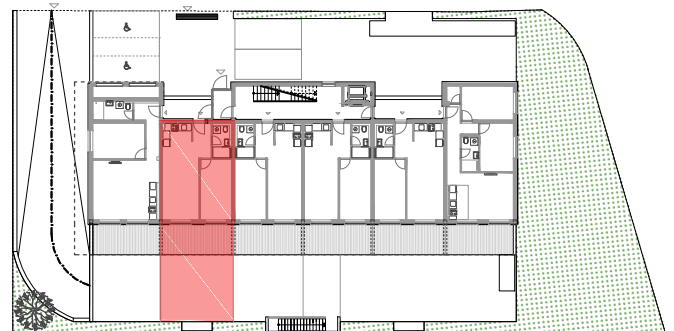


PRIZEMLJE- STAN - 002 - V3

	površina m ²	koef.	NETTO m ²
1 Dnevni boravak / blagovaonica	18.30	1.00	18.30
2 Kuhinja	4.48	1.00	4.48
3 hodnik	3.90	1.00	3.90
4 Kupaonica	3.81	1.00	3.81
5 Soba	12.85	1.00	12.85
6 Natkrivena terasa	15.15	0.50	7.58
7 Nenatkrivena terasa	33.28	0.20	6.66
8 Garažno parkirno mjesto br. 24	13.75	0.50	6.88

UKUPNO 105.52 64.45

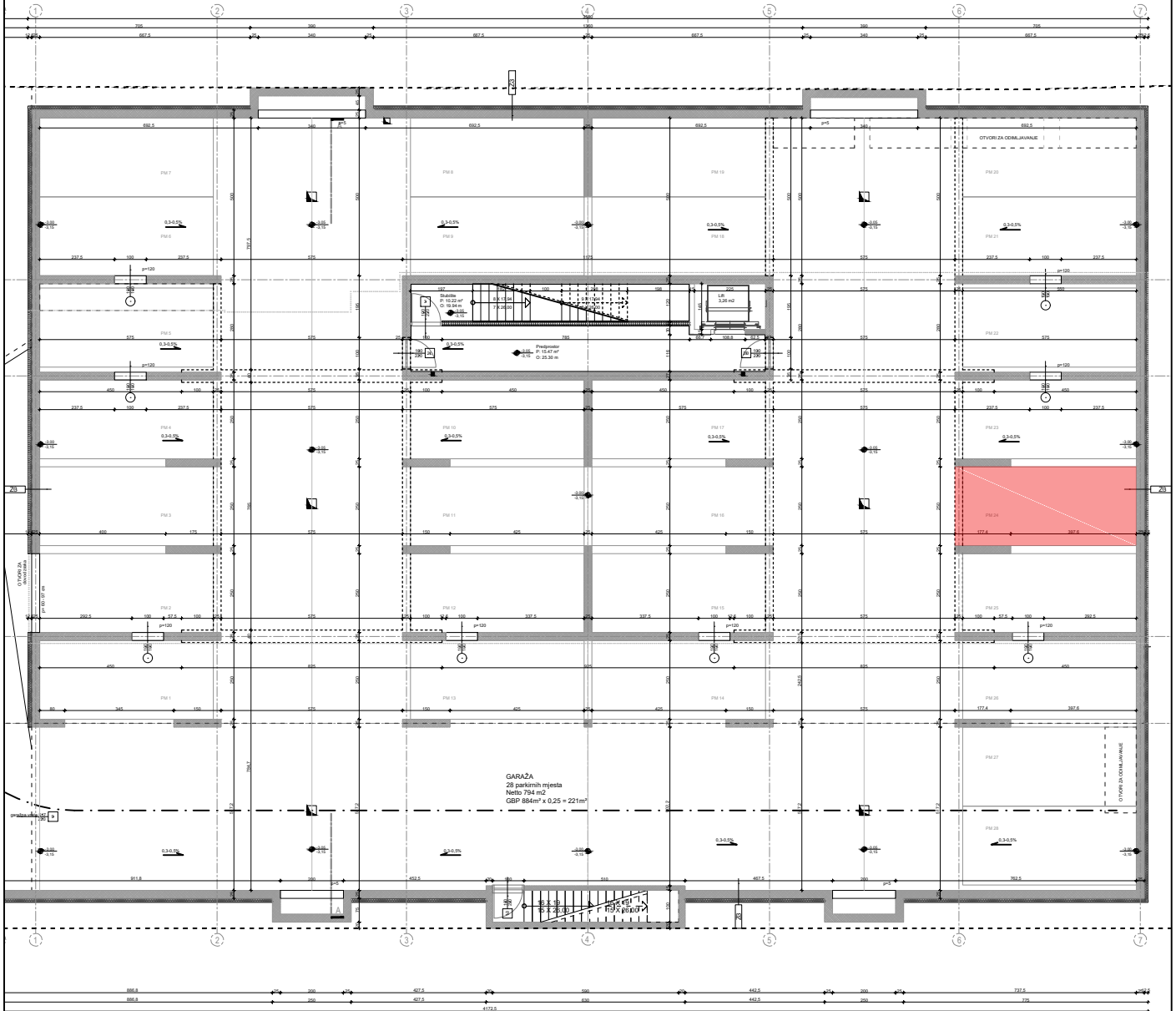


Tlocrt stana 002-V3 - PRIZEMLJE



Širina zidarskog otvora
visina zidarskog otvora

Položaj u zgradi



STAN 002-V3 - PARKIRNO MJESTO U GARAŽI

