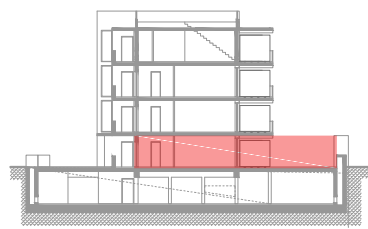
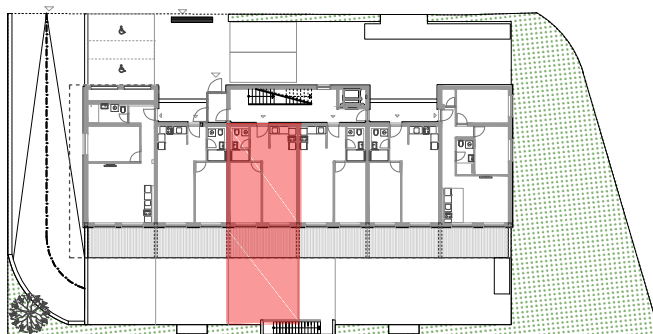


PRIZEMLJE- STAN - 003 - V3

	površina m ²	koef.	NETTO m ²
1 Dnevni boravak / blagovaonica	16.79	1.00	16.79
2 Kuhinja	4.07	1.00	4.07
3 Hodnik/ hodnik	3.84	1.00	3.84
4 Kupaonica	3.80	1.00	3.80
5 Soba	12.85	1.00	12.85
6 Natkrivena terasa	14.52	0.50	7.26
7 Nenatkrivena terasa	30.64	0.20	6.13
8 Garažno parkirno mjesto br. 25	13.75	0.50	6.88

UKUPNO 100.26 61.61

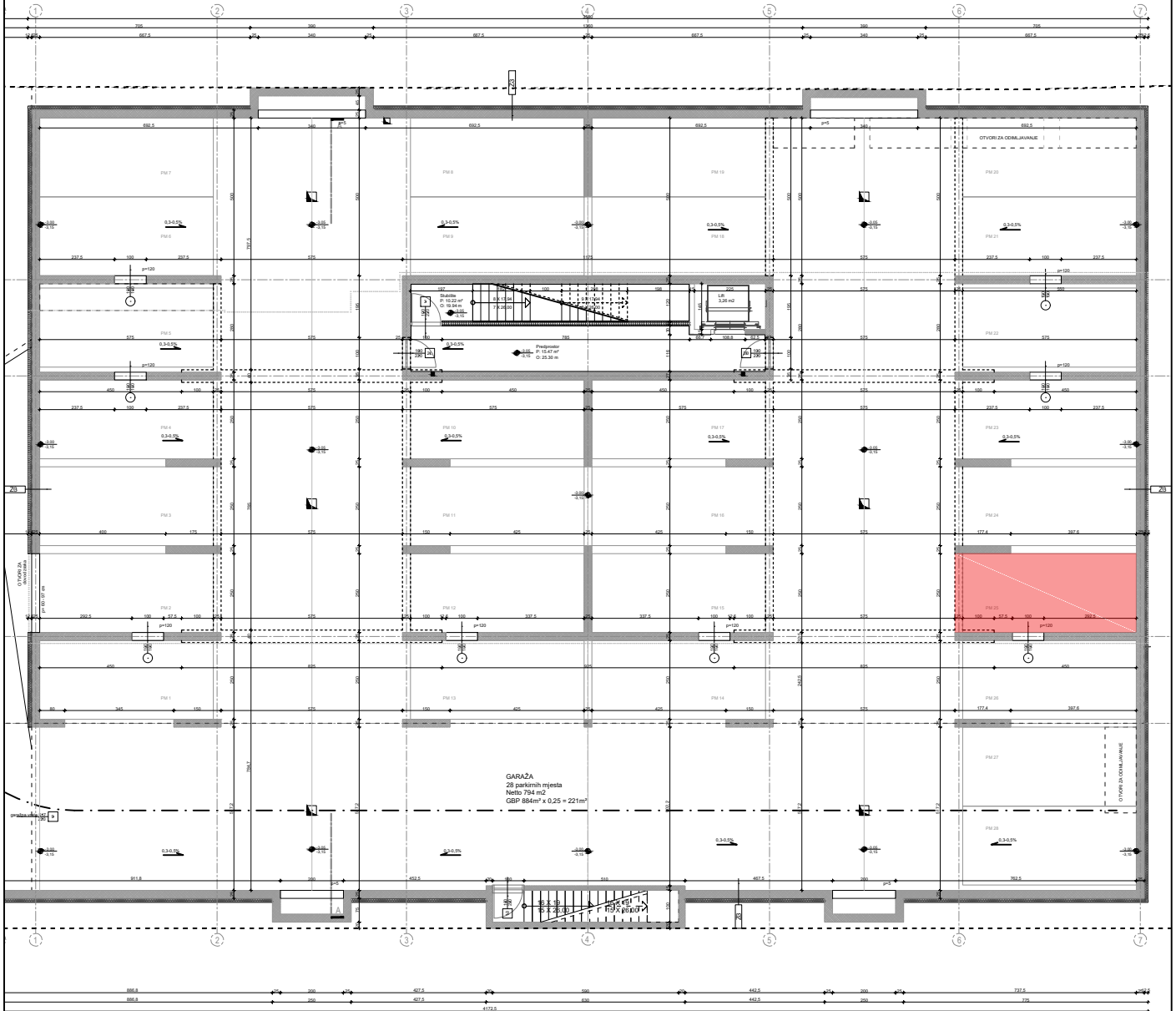


Položaj u zgradi

Tlocrt stana 003-V3 - PRIZEMLJE



Širina zidarskog otvora
visina zidarskog otvora



STAN 003-V3 - PARKIRNO MJESTO U GARAŽI

