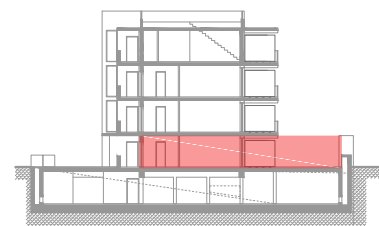
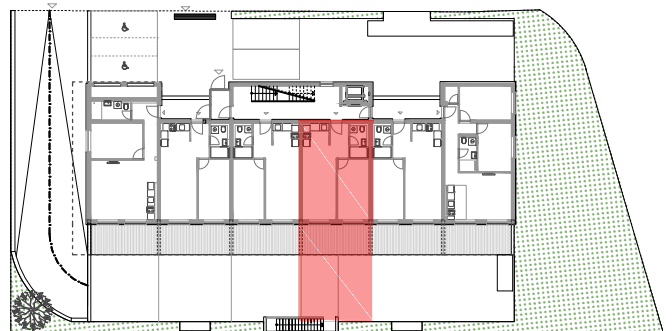


**PRIZEMLJE- STAN - 004 - V3**

	površina m <sup>2</sup>	koef.	NETTO m <sup>2</sup>
1 Dnevni boravak / blagovaonica	16.79	1.00	16.79
2 Kuhinja	4.07	1.00	4.07
3 Hodnik	3.84	1.00	3.84
4 Kupaonica	3.80	1.00	3.80
5 Soba	12.85	1.00	12.85
6 Natkrivena terasa	14.52	0.50	7.26
7 Nenatkrivena terasa	15.80	0.20	3.16
8 Garažno parkirno mjesto br. 26	13.75	0.50	6.88
<b>UKUPNO</b>	<b>85.42</b>		<b>58.65</b>

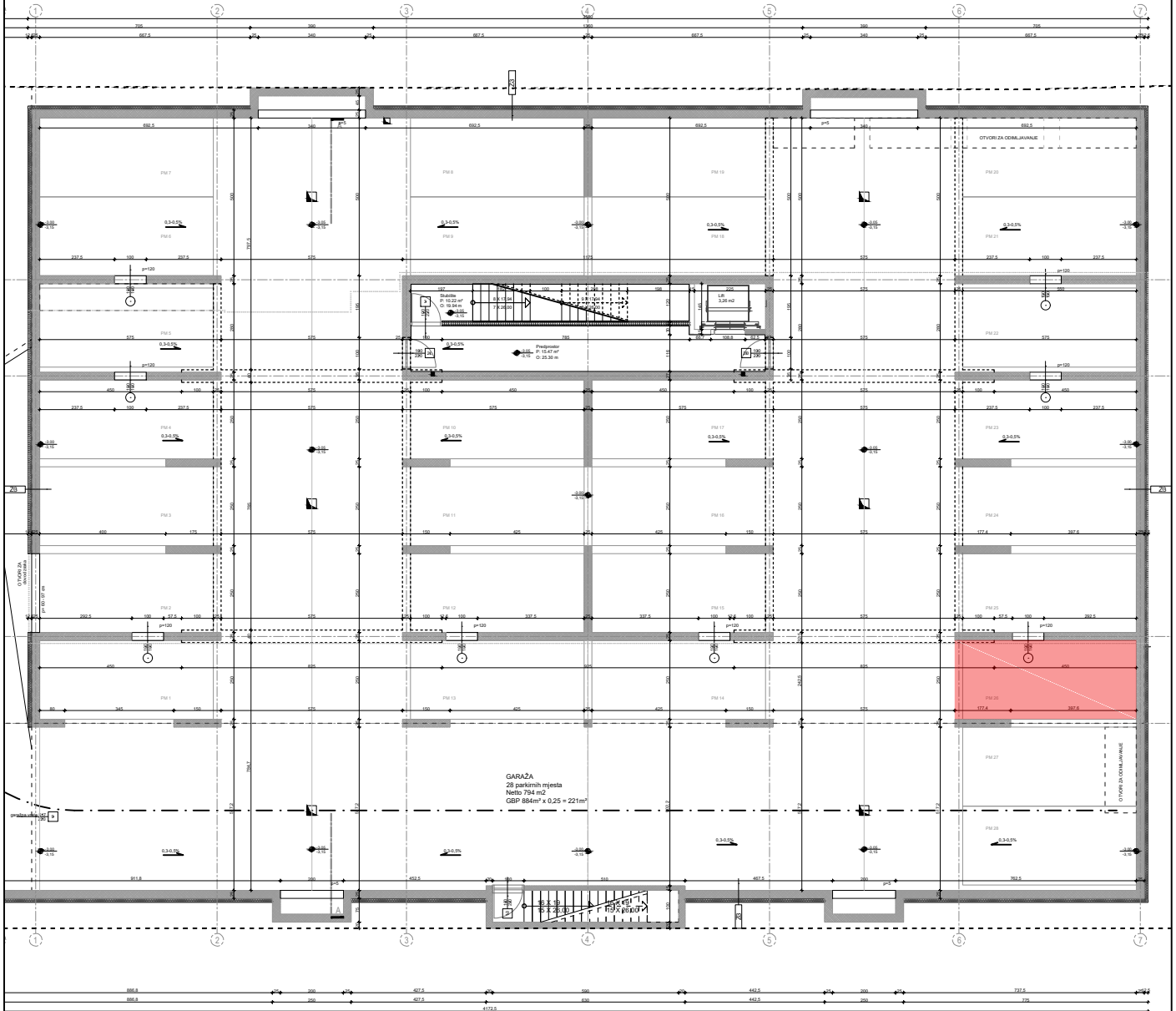


Položaj u zgradi

**Tlocrt stana 004-V3 - PRIZEMLJE**



Širina zidarskog otvora  
visina zidarskog otvora



**STAN 004-V3 - PARKIRNO MJESTO U GARAŽI**

