

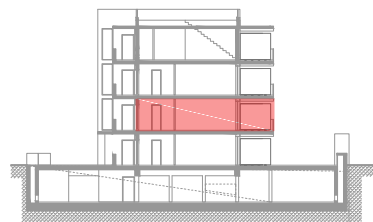
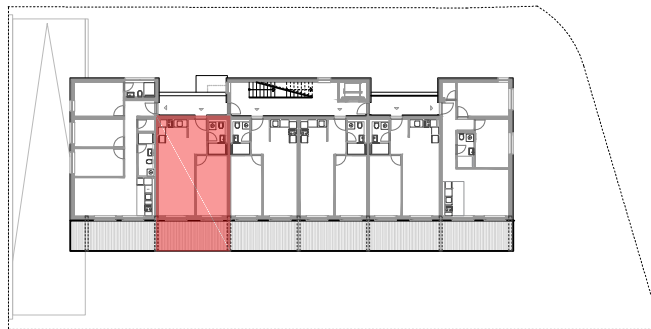
PRVI KAT - STAN - 102- V3

	površina m ²	koef.	NETTO m ²
1 Dnevni boravak / blagovaonica	18.30	1.00	18.30
2 Kuhinja	4.54	1.00	4.54
3 Hodnik	3.84	1.00	3.84
4 Kupaonica	3.80	1.00	3.80
5 Soba	12.85	1.00	12.85
6 Natkrivena terasa	15.15	0.50	7.58
7 Garažno parkirno mjesto br. 13	14.06	0.50	7.03
UKUPNO	72.54		57.94

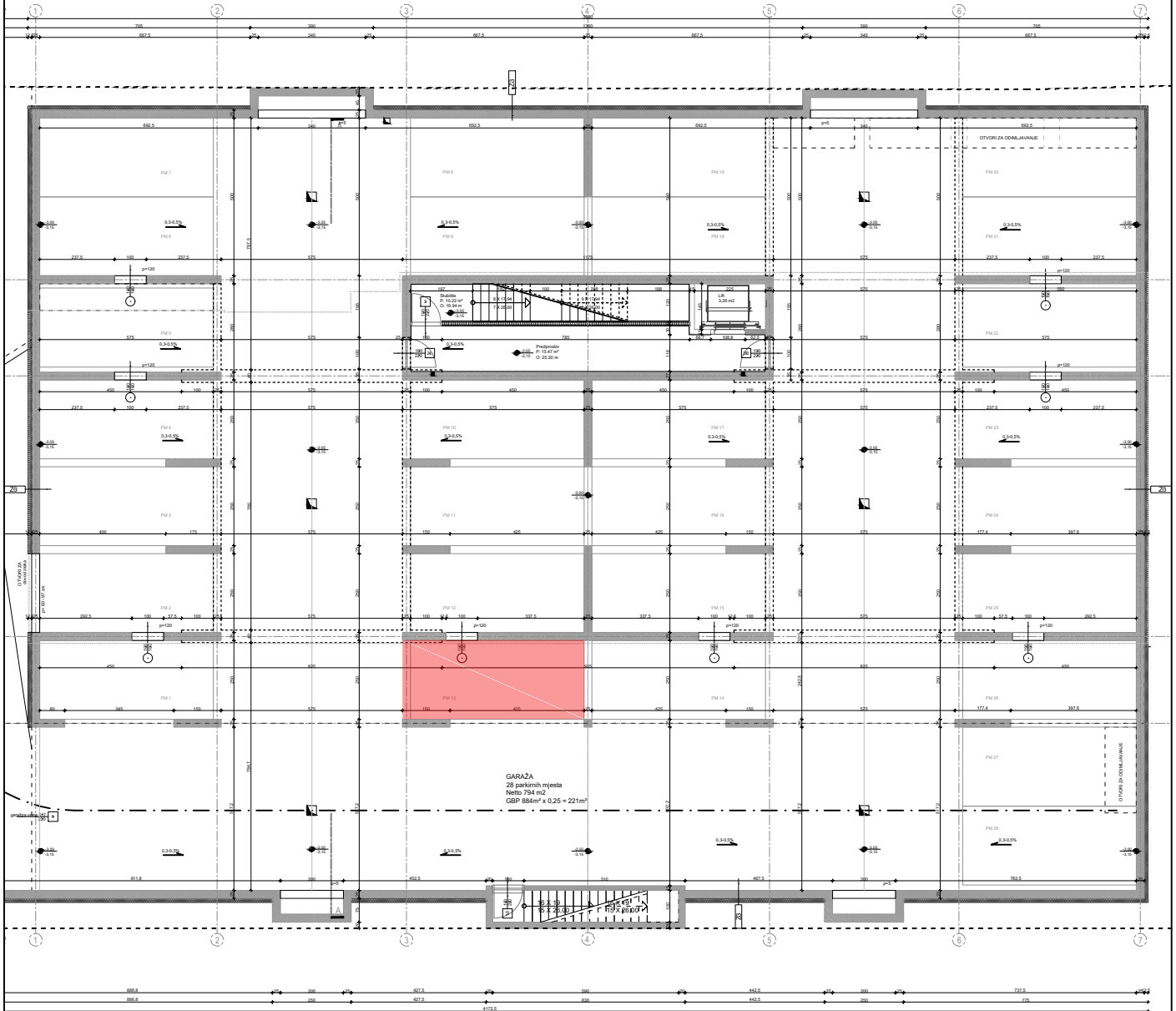
Tlocrt stana 102-V3 - PRVI KAT



Širina zidarskog otvora
visina zidarskog otvora



Položaj u zgradi



STAN 102-V3 - PARKIRNO MJESTO U GARAŽI

