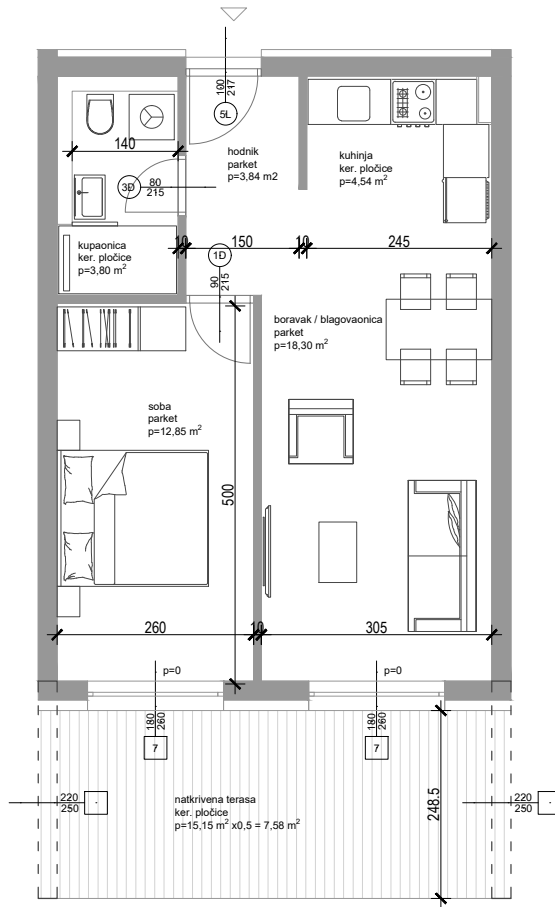


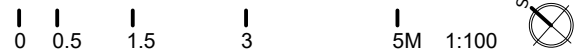
STAN 105 - V3



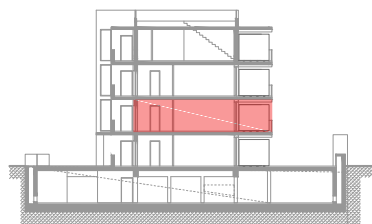
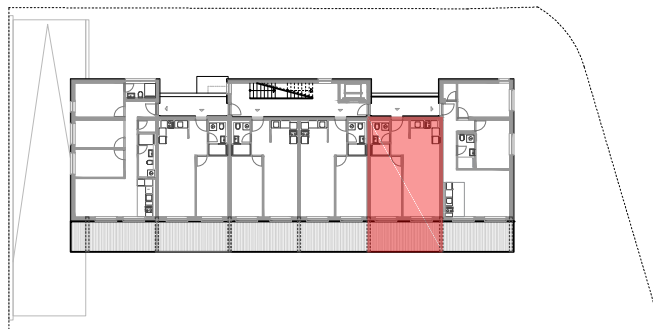
**PRVI KAT - STAN - 105- V3**

	površina m <sup>2</sup>	koef.	NETTO m <sup>2</sup>
1 Dnevni boravak / blagovaonica	18.30	1.00	18.30
2 Kuhinja	4.54	1.00	4.54
3 Hodnik	3.84	1.00	3.84
4 Kupaonica	3.80	1.00	3.80
5 Soba	12.85	1.00	12.85
6 Natkrivena terasa	15.15	0.50	7.58
7 Garažno parkirno mjesto br. 22	15.40	0.50	7.70
<b>UKUPNO</b>	<b>73.88</b>		<b>58.61</b>

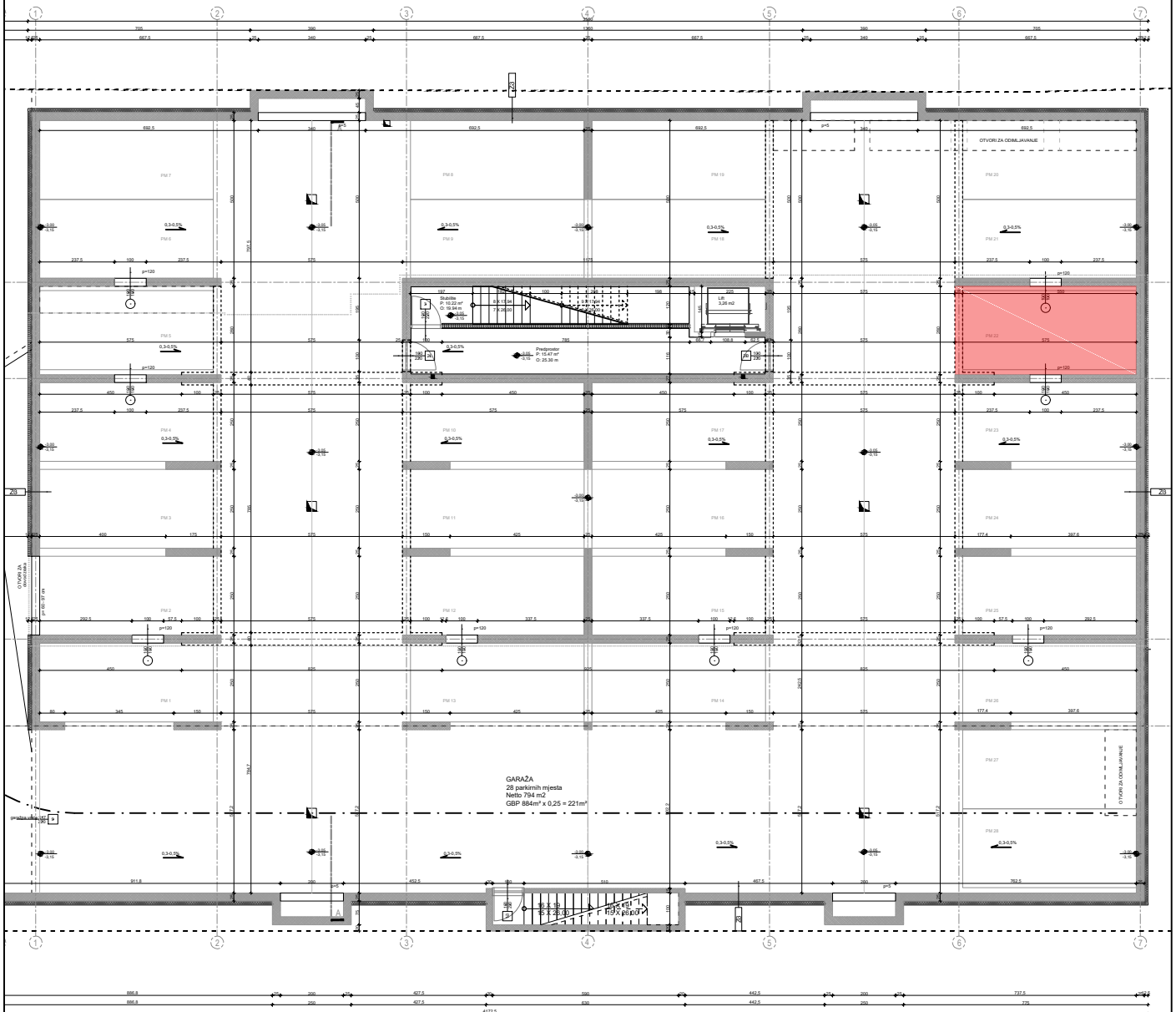
**Tlocrt stana 105-V3 - PRVI KAT**



Širina zidarskog otvora  
visina zidarskog otvora



Položaj u zgradi



**STAN 105-V3 - PARKIRNO MJESTO U GARAŽI**

